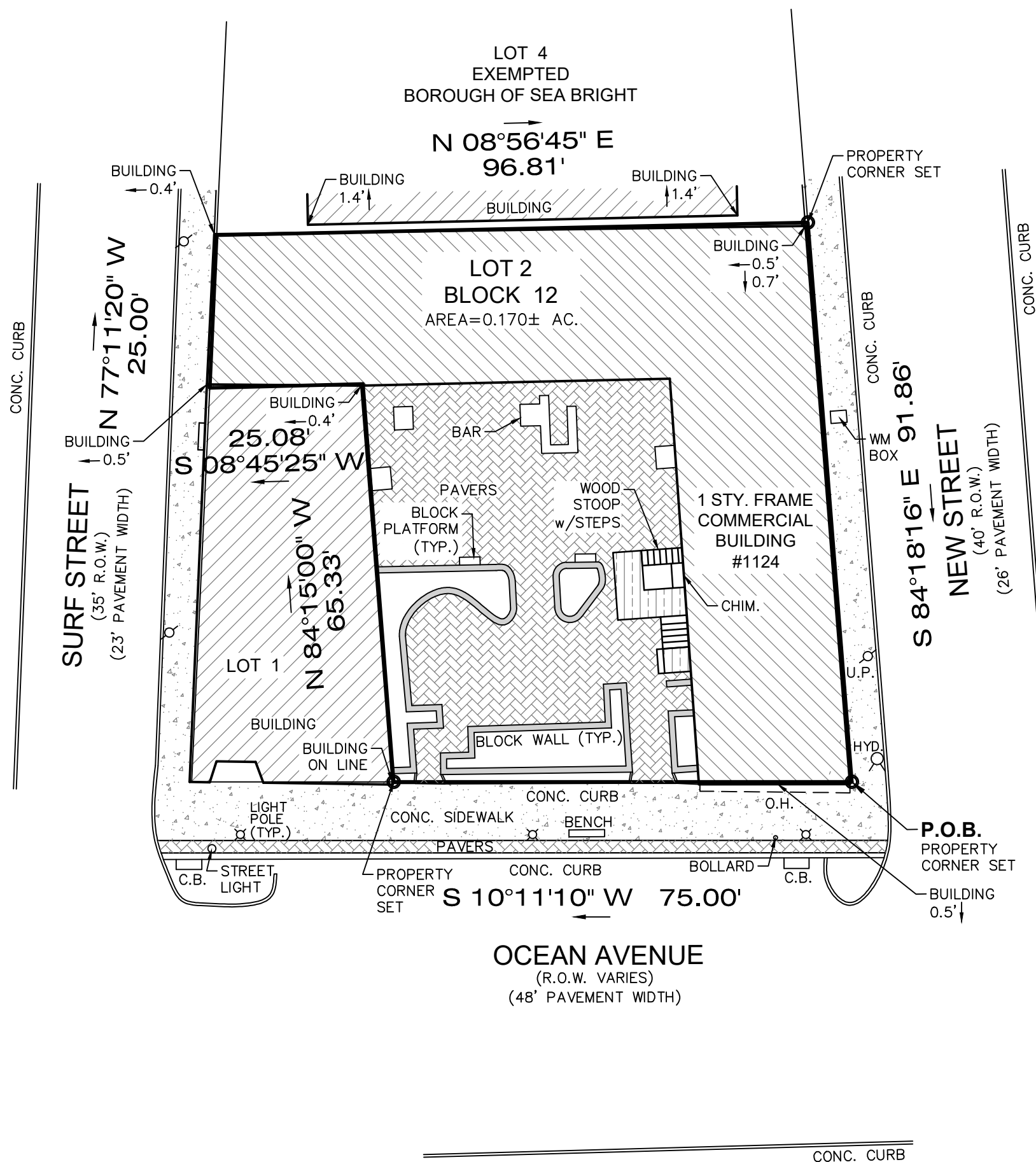


DISCUSSION TOPIC: BUILDING
CROSSES BOUNDARY LINE



DB 9225 PG 7230



DAVID J. VON STEENBURG
PROFESSIONAL LAND SURVEYOR
N.J. LIC. No. 34500

SURVEY OF PROPERTY

BLOCK 12

BOROUGH OF SEA BRIGHT

COUNTY OF MONMOUTH

NEW JERSEY

Scale: 1"=20'	Drawn By: WM	Date: 8/17/23	JOB #. 23-03963	CAD File # 23-03963WM	Sheet # 1 OF 1
------------------	-----------------	------------------	--------------------	--------------------------	-------------------