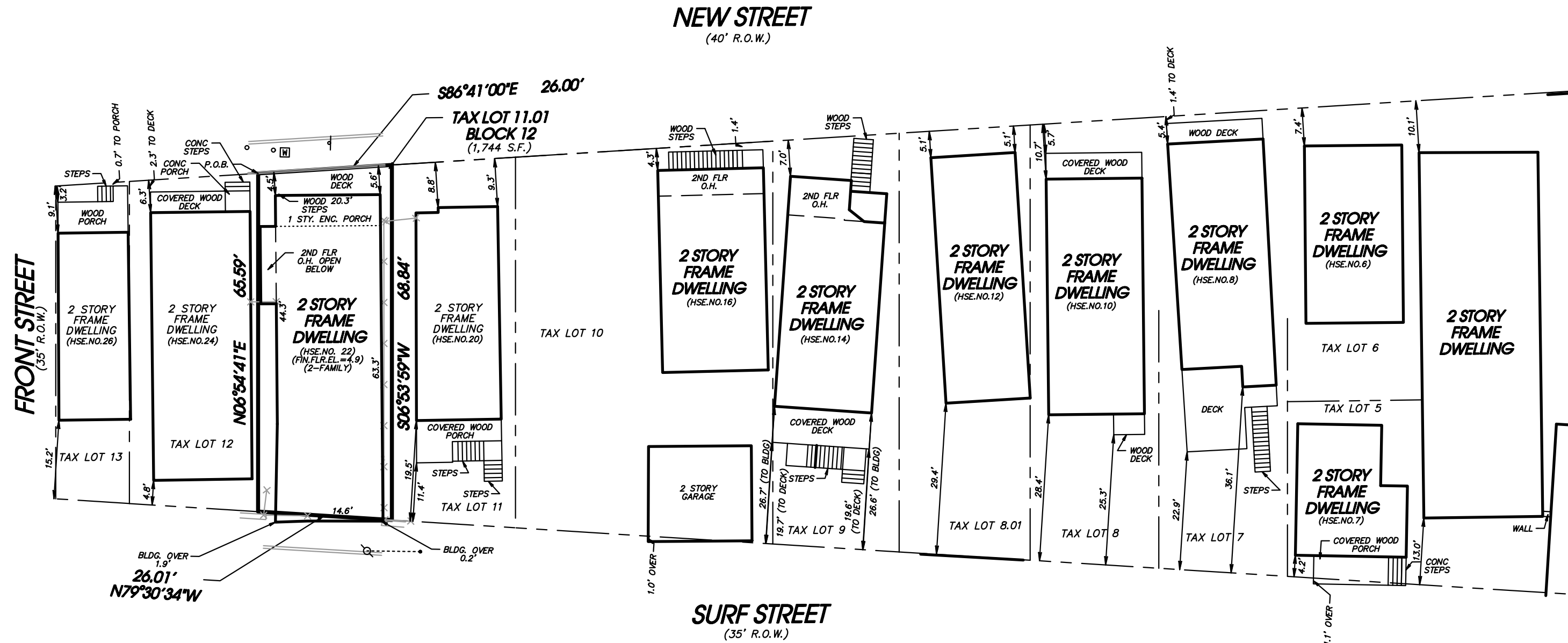
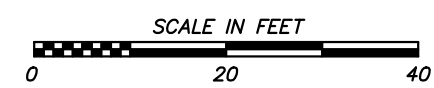


THIS PLAN IS TO BE UTILIZED  
FOR THE AVERAGING OF THE FRONT  
SETBACKS ALONG NEW & SURF STREETS ONLY.



**LEGEND**

- - - 3 - - - = EXIST. CONTOUR
- M.B.S.L. = MINIMUM BUILDING SETBACK LINE
- 3.5 = EXIST. ELEVATION
- - - E - - - = EXIST. OVERHEAD UTILITY WIRES



**NEW STREET**

AVERAGE FRONT SETBACK TO DWELLING = 7.2 FT.  
AVERAGE FRONT SETBACK TO DECK/PORCH = 2.3 FT.

**SURF STREET**

AVERAGE FRONT SETBACK TO DWELLING = 15.9 FT.  
AVERAGE FRONT SETBACK TO DECK/PORCH = 15.6 FT.

**PLAN OF FRONT SETBACKS**  
**TAX LOT 11.01 BLOCK 12**  
BOROUGH OF SEA BRIGHT  
MONMOUTH COUNTY, NEW JERSEY

No.	DATE	REVISION	BY	CHK.

	1/4/22
<b>JOHN P. AUGUSTINE</b>	DATE
N.J. Professional Land Surveyor No. 34838	
	1/4/22
<b>BRUCE A. JACOBS</b>	DATE
N.J. Professional Engineer No. 37489	

SCALE: 1" = 20'
DATE: 1/3/22
DRAWN BY: CA/MJD
CHECKED BY:
SHEET NO. 2 OF 2
PROJECT NUMBER 11241

**GRAVATT CONSULTING GROUP**  
Engineers • Surveyors • Planners • Environmental Scientists  
414 Lacey Road, Forked River, NJ 08731  
Tel. 609 • 693 • 6127 www.gravattconsulting.com  
Certificate of Authorization No. 24GA27925900