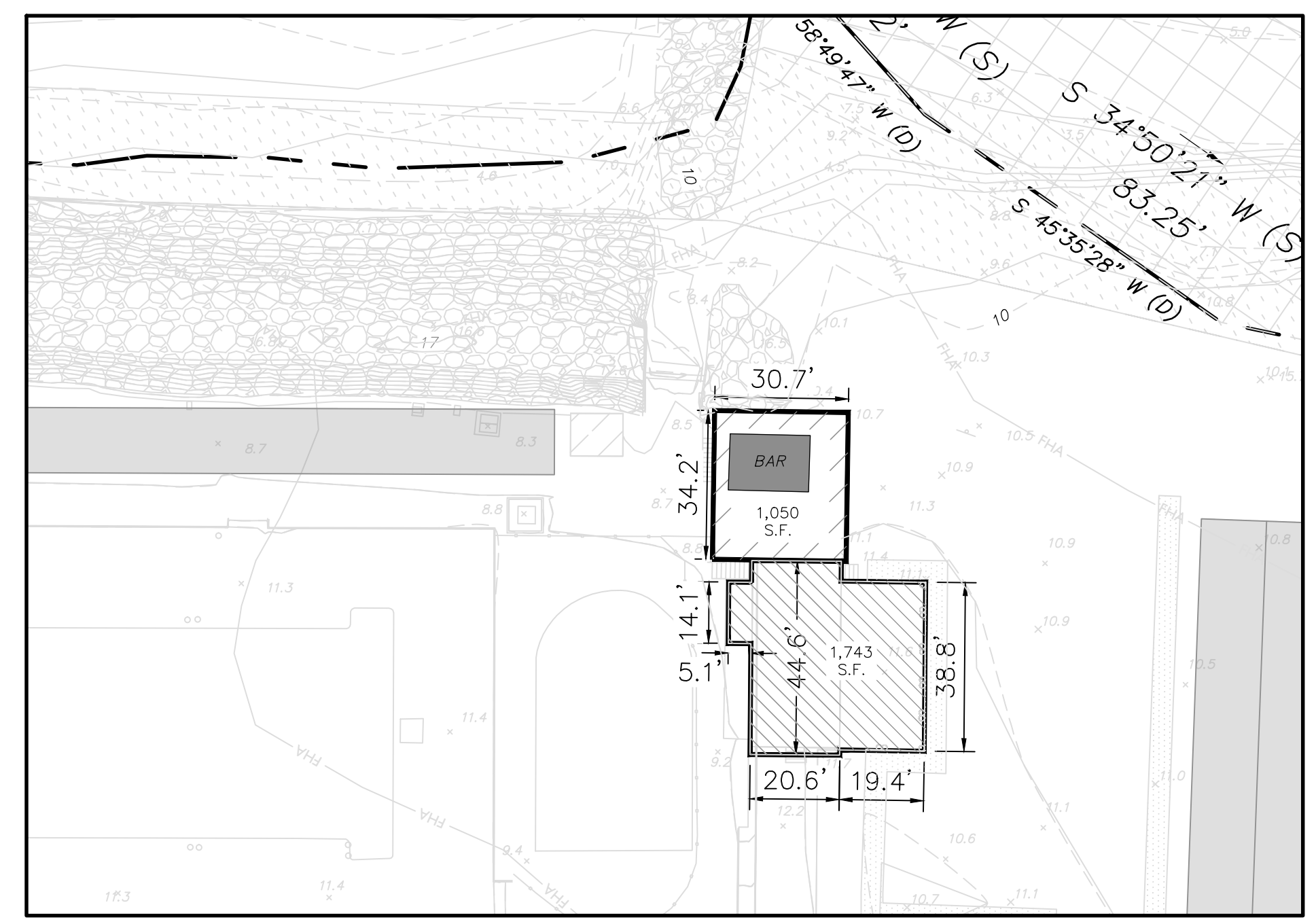
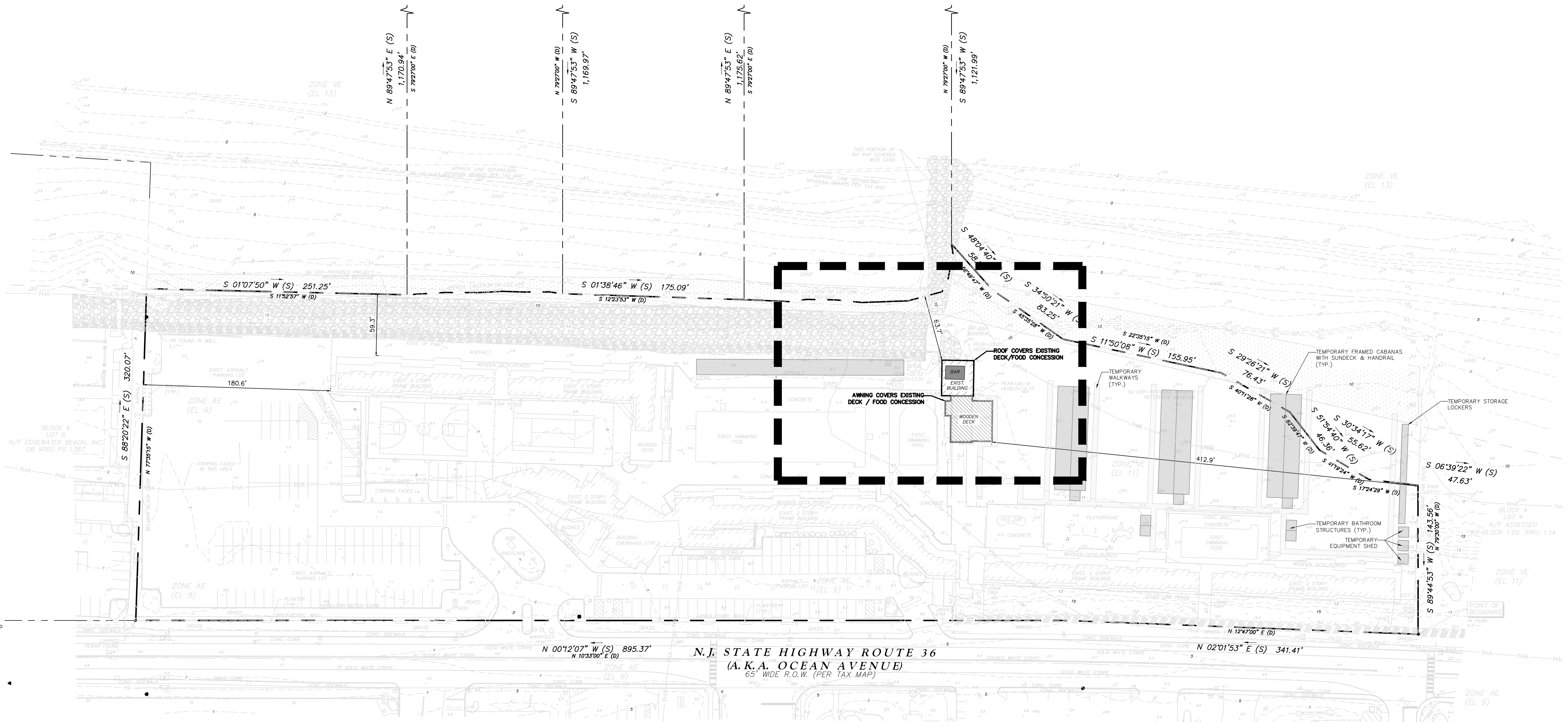


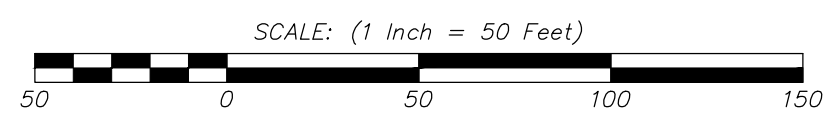
W:\Projects\211116 - Streets - The Bar at Cliffwood Sea Bright\DWG\Design Drawings\211116-Ext Cond-Amended Site Plan.dwg 2/22/2021 9:14:21 AM

- LEGEND**
- GAS VALVE
 - WATER VALVE
 - WATER METER
 - UTILITY MANHOLE
 - DRAINAGE MANHOLE
 - ELECTRICAL MANHOLE
 - SANITARY MANHOLE
 - TELEPHONE MANHOLE
 - TRAFFIC SIGN
 - TRAFFIC SIGN (2 POST)
 - STREET SIGN
 - LIGHT POST
 - UTILITY POLE
 - FIRE HYDRANT
 - DRAINAGE INLET (TYPE "A")
 - DRAINAGE INLET (TYPE "B")
 - DRAINAGE INLET (TYPE "C")
 - DRAINAGE LINE
 - ELECTRIC LINE
 - GAS LINE
 - SANITARY SEWER LINE
 - TELEPHONE LINE
 - WATER LINE
 - OVERHEAD WIRES
 - MONITORING WELL
 - IRON PIPE FOUND
 - CAPPED REBAR FOUND
 - CONCRETE MONUMENT FOUND
 - SURVEY
 - FILE MAP
 - GAS METER
 - D.C. DEPRESSED CURB
 - F.C. FLUSH CURB



ENLARGED VIEW
SCALE: 1"=30'

NOTE:
THERE ARE NO PROPOSED
IMPROVEMENTS AT THIS TIME.



NO.	DATE	DESCRIPTION	DRAWN BY

AMENDED PRELIMINARY & FINAL SITE PLAN
OF
LOT 5 BLOCK 4
BOROUGH OF SEA BRIGHT MONMOUTH COUNTY NEW JERSEY

<p>WH ENGINEERING</p> <p>CERT. OF AUTH. NO. 246A28117300 257 MONMOUTH ROAD, BLDG. A, STE. 7, OAKHURST, NJ 07755 PHONE: 732-223-1313 WWW.WHENGINEERING.COM</p>	<p>EXISTING CONDITIONS / AMENDED SITE PLAN</p> <p>WALTER JOSEPH HOPKIN N.J. PROFESSIONAL ENGINEER, LIC. NO. 40673</p>
<p>SCALE: 1"= 50'</p>	<p>DRAWN BY: KMB DATE: 2/22/21 JOB No.: 21116 SHEET No.: 2 OF 2</p>